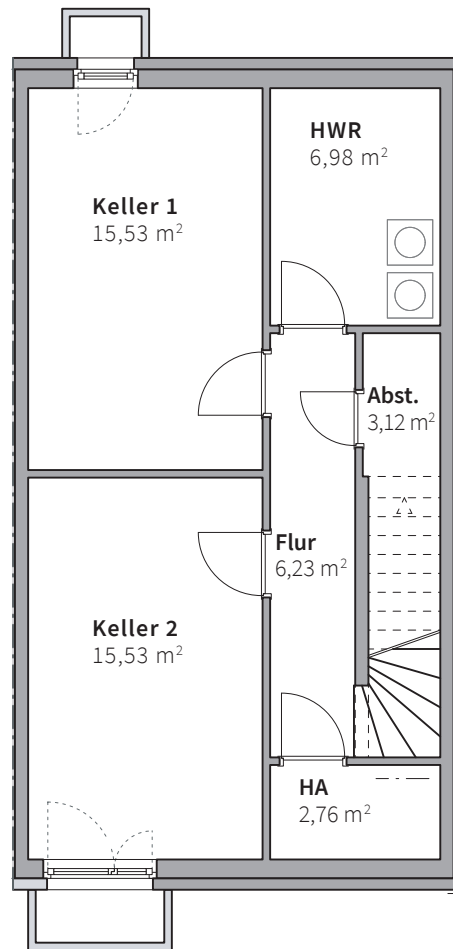
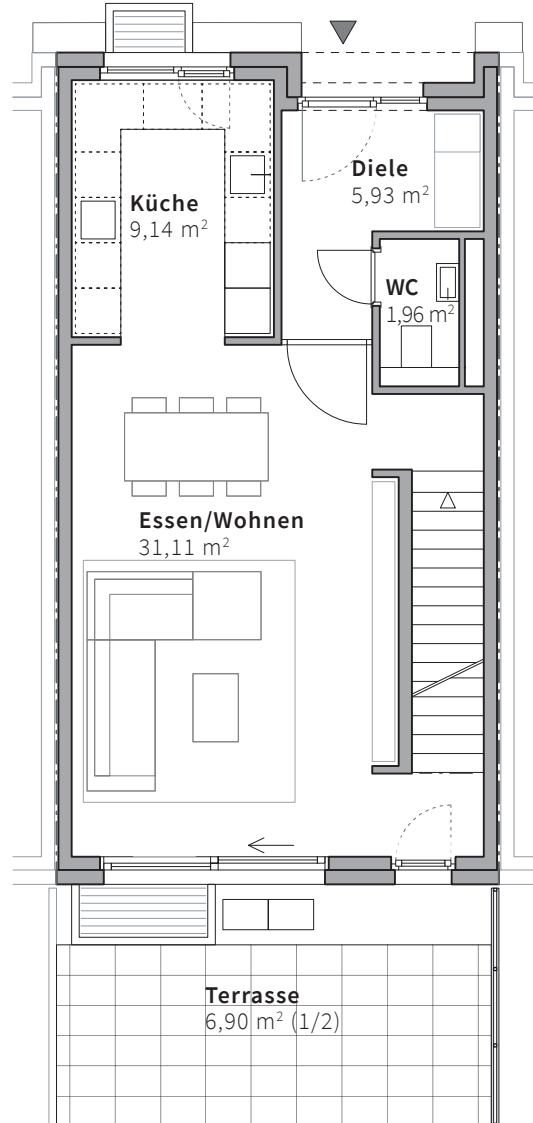


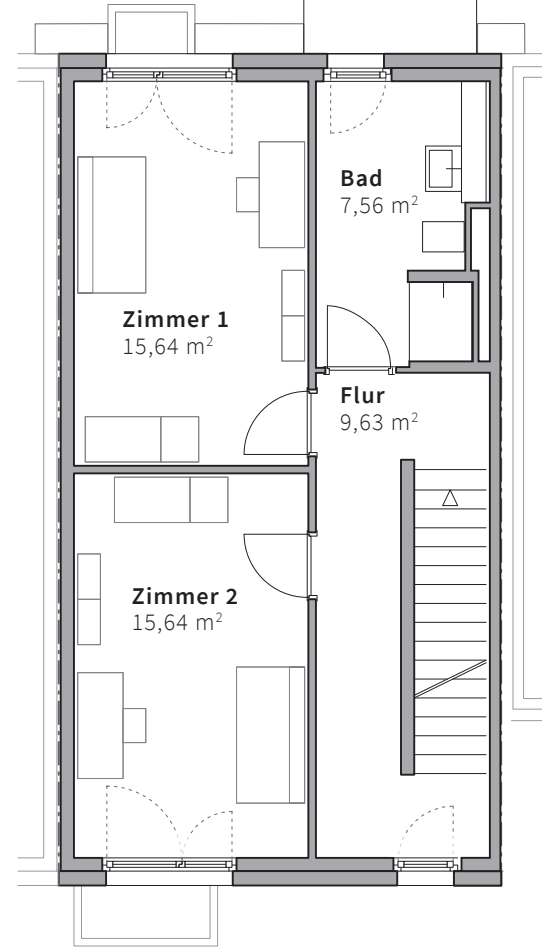
Untergeschoss



Erdgeschoss



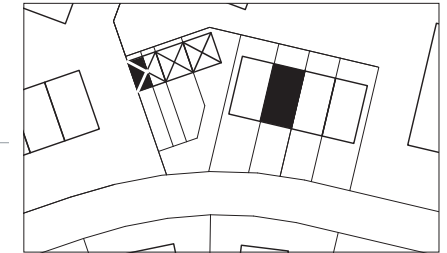
Obergeschoss



M 1:100

## HAUS D2

Reihenmittelhaus



### Wohnflächenberechnung:

#### Untergeschoss

Keller 1	15,53 m <sup>2</sup>
Keller 2	15,53 m <sup>2</sup>
HWR	6,98 m <sup>2</sup>
Abst.	3,12 m <sup>2</sup>
HA	2,76 m <sup>2</sup>
Flur	6,23 m <sup>2</sup>

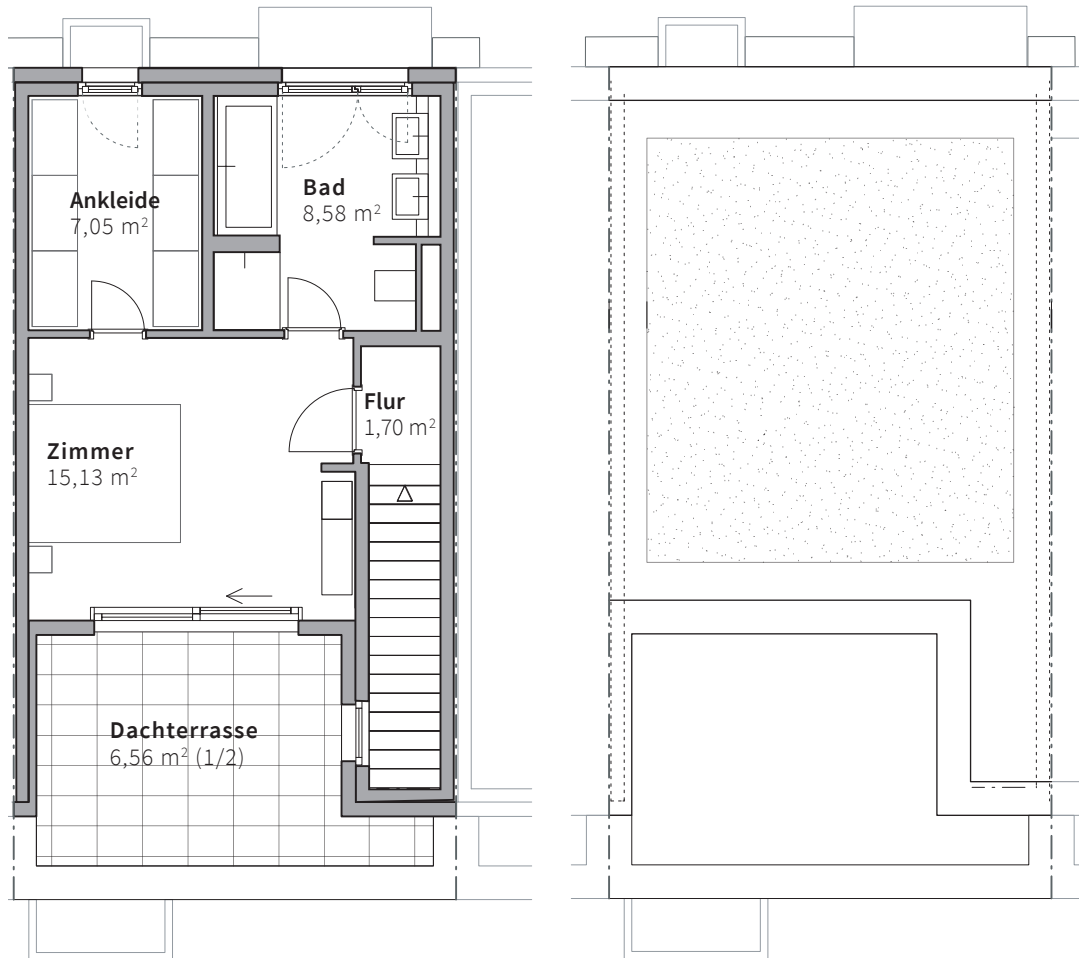
#### Erdgeschoss

Küche	9,14 m <sup>2</sup>
Essen/Wohnen	31,11 m <sup>2</sup>
Diele	5,93 m <sup>2</sup>
WC	1,96 m <sup>2</sup>
Terrasse (1/2)	6,90 m <sup>2</sup>

#### Obergeschoss

Zimmer 1	15,64 m <sup>2</sup>
Zimmer 2	15,64 m <sup>2</sup>
Bad	7,56 m <sup>2</sup>
Flur	9,63 m <sup>2</sup>

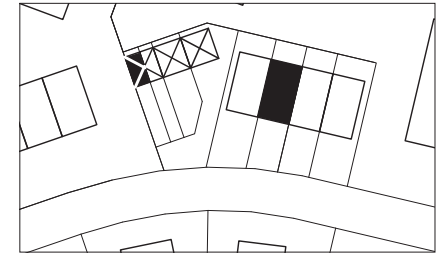
Staffelgeschoss



M 1:100

# HAUS D2

Reihenmittelhaus



## Wohnflächenberechnung:

### Staffelgeschoss

Ankleide	7,05 m <sup>2</sup>
Bad	8,58 m <sup>2</sup>
Flur	1,70 m <sup>2</sup>
Zimmer	15,12 m <sup>2</sup>
Dachterrasse (1/2)	6,56 m <sup>2</sup>

**Wohnfläche gesamt** 142,52 m<sup>2</sup>

**Nutzfläche gesamt** 50,15 m<sup>2</sup>